



Legend

- Street Names (4,500-1,500)
- City Limits
- Street Centerlines
 - Freeway
 - Arterial
 - Collector
 - Local
 - Alley
 - Private
 - Ramp
 - Trail
- Lotlines
 - Condominium 1st Floor
 - Condominium 2nd Floor
 - Condominium 3rd Floor
 - Condominium 4th Floor
 - Parcel
 - Right-of-Way
- San Francisco Bay
 - City Park
 - County Park
 - Open Space
 - State Park
 - Wildland
- Place Of Worship
 - Caltrain
- San Mateo County
 - ATHERTON
 - BELMONT
 - BRISBANE
 - BRISBANE QUARRY
 - BROADMOOR
 - BURLINGAME
 - BURLINGAME HILLS
 - CALIFORNIA GOLF CLUB
 - COLMA
 - COUNTRY CLUB PARK
 - DALY CITY

1: 4,000



666.7 0 333.33 666.7 Feet

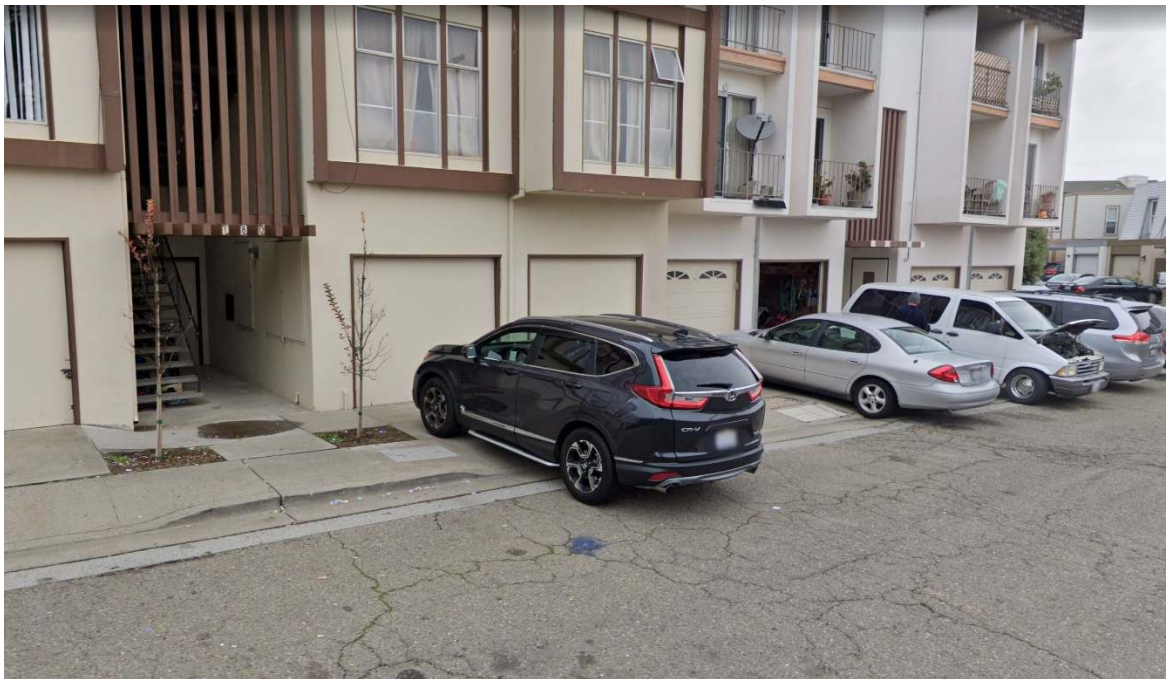
NAD_1983_StatePlane_California_III_FIPS_0403_Feet
City of San Bruno IT/GIS Services

This map is for reference only. The City of San Bruno and its agents are not responsible for any errors, omissions or misuse. Users should contact city staff directly to verify content hereon.

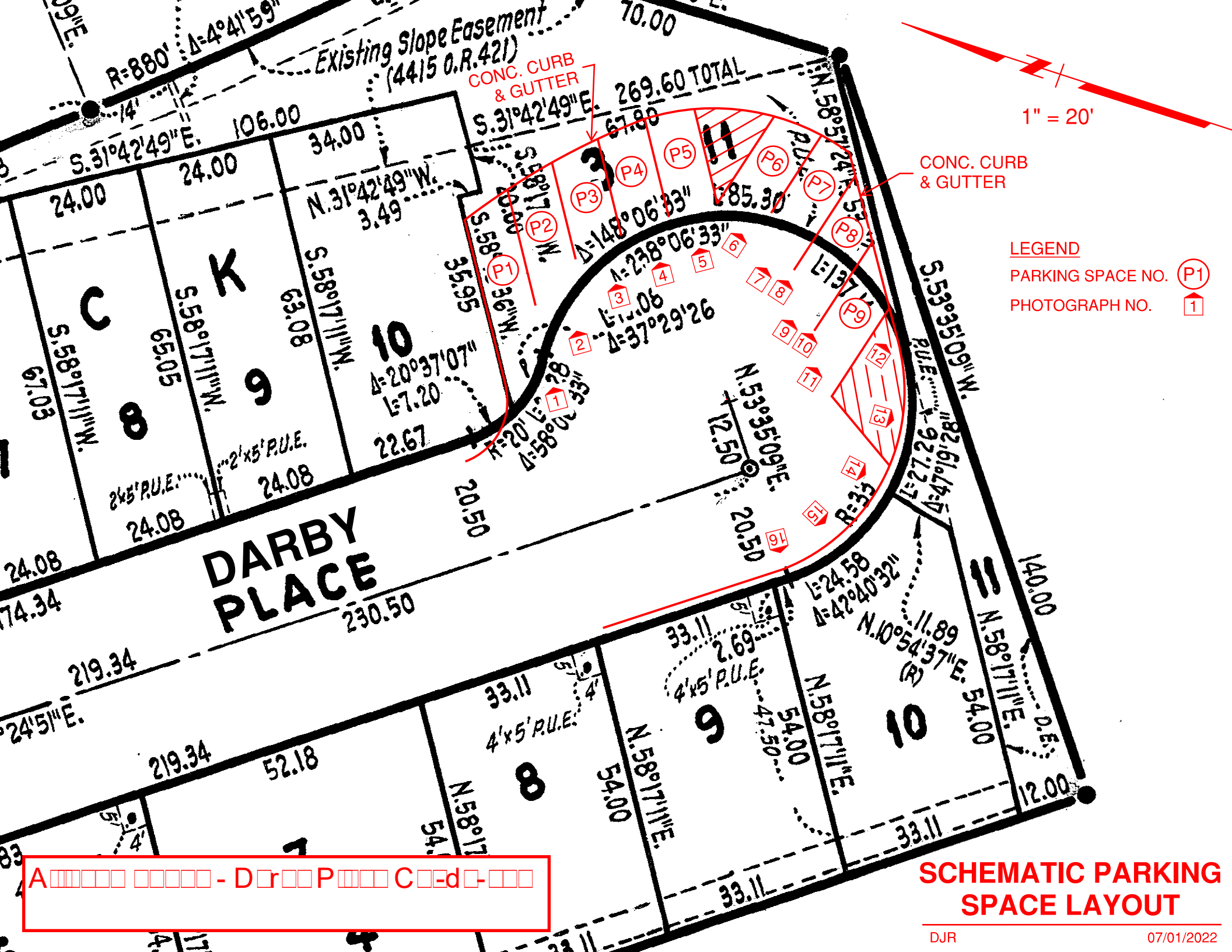
Notes



Darby Place



Oxford Lane



1" = 20'

CONC. CURB
& GUTTER

LEGEND

PARKING SPACE NO. P1

PHOTOGRAPH NO. 1

A[] [] [] [] [] - Dr[] P[] [] C[] - d[] - [] []

**SCHEMATIC PARKING
SPACE LAYOUT**